



Jayawant Shikshan Prasarak Mandal's
JSPM Narhe Technical Campus

S. No. 12/2/2 and 14/9, Narhe, Tal : Haveli, Dist.: Pune – 411041

Phone : +91 20 2460 8700, 701, 702 Email : director@jspmntc.edu.in Web : www.jspmntc.edu.in

Affiliated to Savitribai Phule Pune University. Approved by AICTE New Delhi and DTE Maharashtra.

DTE Code : 6755 PUN Code : CEGP019070 AISHE Code : C-45874



Prof.(Dr.)T. J.Sawant
D.E.E., B.E.(Electrical),Ph.D., MISTE
Founder - Secretary

Prof.(Dr.)M.M.Sardeshmukh
B.Tech (E&TC) M.Tech (E&TC),Ph.D.(Engg.)
DIRECTOR

7.1: Institutional Values and Social Responsibilities

7.1.2: The Institution has facilities and initiatives

Supporting documents as per SoP:

b. Geo-tagged photographs/videos of the facilities.

Director



Jayawant Shikshan Prasarak Mandal's
JSPM Narhe Technical Campus

S. No. 12/2/2 and 14/9, Narhe, Tal : Haveli, Dist.: Pune – 411041
Phone : +91 20 2460 8700, 701, 702 Email : director@jspmntc.edu.in Web : www.jspmntc.edu.in
Affiliated to Savitribai Phule Pune University. Approved by AICTE New Delhi and DTE Maharashtra.
DTE Code : 6755 PUN Code : CEGP019070 AISHE Code : C-45874



Prof.(Dr.)T. J.Sawant
D.E.E., B.E.(Electrical),Ph.D., MISTE
Founder - Secretary

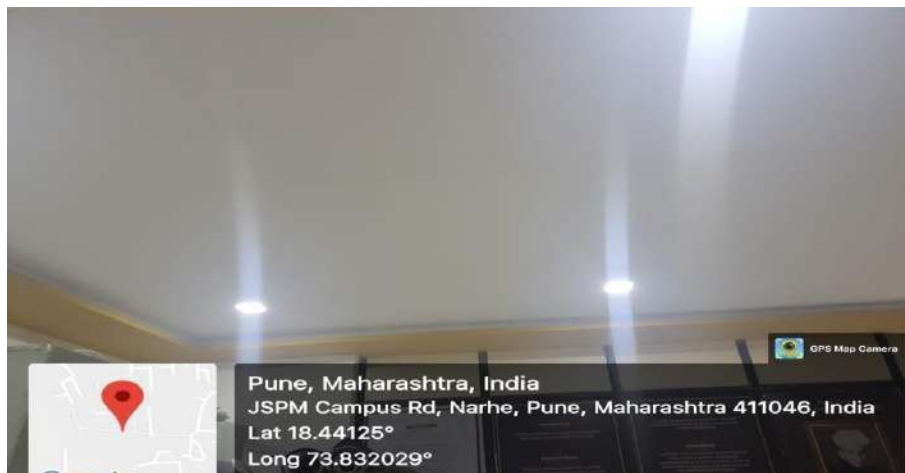
Prof.(Dr.)M.M.Sardeshmukh
B.Tech (E&TC) M.Tech (E&TC),Ph.D.(Engg.)
DIRECTOR

A.Y. 2023-24

Solar PV Plant



Use of LED bulbs/ power efficient equipment




Director
Director
JSPM-NTC
JSPM Narhe Technical Campus
Narhe, Pune - 411041



Jayawant Shikshan Prasarak Mandal's
JSPM Narhe Technical Campus

S. No. 12/2/2 and 14/9, Narhe, Tal : Haveli, Dist.: Pune – 411041
Phone : +91 20 2460 8700, 701, 702 Email : director@jspmntc.edu.in Web : www.jspmntc.edu.in
Affiliated to Savitribai Phule Pune University. Approved by AICTE New Delhi and DTE Maharashtra.
DTE Code : 6755 PUN Code : CEGP019070 AISHE Code : C-45874



Prof.(Dr.)T. J.Sawant
D.E.E., B.E.(Electrical),Ph.D., MISTE
Founder - Secretary

Prof.(Dr.)M.M.Sardeshmukh
B.Tech (E&TC) M.Tech (E&TC),Ph.D.(Engg.)
DIRECTOR

Wheeling to the Grid




Director
Director
JSPM-NTC
JSPM Narhe Technical Campus
Narhe, Pune - 411041



Jayawant Shikshan Prasarak Mandal's JSPM Narhe Technical Campus

S. No. 12/2/2 and 14/9, Narhe, Tal : Haveli, Dist.: Pune – 411041

Phone : +91 20 2460 8700, 701, 702 Email : director@jspmntc.edu.in Web : www.jspmntc.edu.in

Affiliated to Savitribai Phule Pune University. Approved by AICTE New Delhi and DTE Maharashtra.

DTE Code : 6755 PUN Code : CEGP019070 AISHE Code : C-45874



Prof.(Dr.) T. J.Sawant

D.E.E., B.E.(Electrical), Ph.D., MISTE
Founder - Secretary

Prof.(Dr.)M.M.Sardeshmukh

BTech (E&TC) MTech (E&TC), Ph.D. (Engg)
DIRECTOR

Date: 04/03/2024

Description of Waste Management:

I. Solid Waste Management:

The recyclable waste, like paper waste is handed over the authorized waste collecting agent for further recycling.



Photographs of waste collection bins

II. Liquid Waste Management:

The college has installed sewage treatment plant for treatment of the sewage water which is used for gardening purpose.



Photographs of sewage treatment plant

III. Waste water Recycling:

The E-waste is disposed off through authorized agency.


Director
Director
JSPM-NTC
JSPM Narhe Technical Campus
Narhe, Pune - 411041



Jayawant Shikshan Prasarak Mandal's JSPM Narhe Technical Campus



S. No. 12/2/2 and 14/9, Narhe, Tal : Haveli, Dist.: Pune – 411041
Phone : +91 20 2460 8700, 701, 702 Email : director@jspmntc.edu.in Web : www.jspmntc.edu.in
Affiliated to Savitribai Phule Pune University. Approved by AICTE New Delhi and DTE Maharashtra.
DTE Code : 6755 PUN Code : CEGP019070 AISHE Code : C-45874

Prof.(Dr.)T. J.Sawant
D.E.E., B.E.(Electrical),Ph.D., MISTE
Founder - Secretary

Prof.(Dr.) S.A.Choudhari
B.E.(CWM),M.E.(WRE) Ph.D.(Engg.)
DIRECTOR

Date: 04/03/2023

7.1.4 Description of Waste Management:

I. Solid Waste Management:

The recyclable waste, like paper waste is handed over the authorized waste collecting agent for further recycling.



Photographs of waste collection bins

II. Liquid Waste Management:

The college has installed a sewage treatment plant for treatment of the sewage water which is used for gardening purpose.



Photographs of sewage treatment plant

III. Waste water Recycling:

The E-waste is disposed of through authorized agency.


Director

Dr. S.A. Chaudhari



Jayawant Shikshan Prasarak Mandal's JSPM Narhe Technical Campus

S. No. 12/2/2 and 14/9, Narhe, Tal : Haveli, Dist.: Pune – 411041

Phone : +91 20 2460 8700, 701, 702 Email : director@jspmntc.edu.in Web : www.jspmntc.edu.in

Affiliated to Savitribai Phule Pune University. Approved by AICTE New Delhi and DTE Maharashtra.

DTE Code : 6755 PUN Code : CEGP019070 AISHE Code : C-45874



Prof.(Dr.) T. J.Sawant

D.E.E., B.E.(Electrical), Ph.D., MISTE
Founder - Secretary

Prof.(Dr.)M.M.Sardeshmukh

BTech (E&TC) MTech (E&TC), Ph.D. (Engg)
DIRECTOR

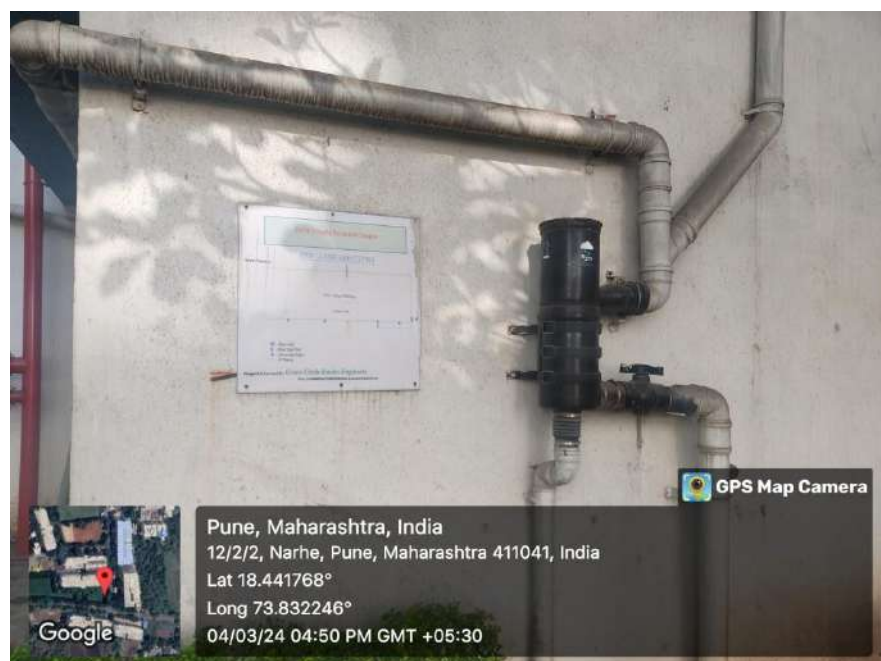
Date: 04/03/2024

Water Conservation facilities available in the Institution:

I. Rain Water Harvesting:



Layout of Rainwater Harvesting



Rain Trap Filter



Jayawant Shikshan Prasarak Mandal's JSPM Narhe Technical Campus

S. No. 12/2/2 and 14/9, Narhe, Tal : Haveli, Dist.: Pune – 411041

Phone : +91 20 2460 8700, 701, 702 Email : director@jspmntc.edu.in Web : www.jspmntc.edu.in

Affiliated to Savitribai Phule Pune University. Approved by AICTE New Delhi and DTE Maharashtra.

DTE Code : 6755 PUN Code : CEGP019070 AISHE Code : C-45874



Prof.(Dr.) T. J.Sawant

D.E.E., B.E.(Electrical), Ph.D., MISTE
Founder - Secretary

Prof.(Dr.)M.M.Sardeshmukh

BTech (E&TC) MTech (E&TC), Ph.D. (Engg)
DIRECTOR

II. Bore wells:



(i)



(ii)



(iii)



(iv)



Jayawant Shikshan Prasarak Mandal's JSPM Narhe Technical Campus

S. No. 12/2/2 and 14/9, Narhe, Tal : Haveli, Dist.: Pune – 411041

Phone : +91 20 2460 8700, 701, 702 Email : director@jspmntc.edu.in Web : www.jspmntc.edu.in

Affiliated to Savitribai Phule Pune University. Approved by AICTE New Delhi and DTE Maharashtra.

DTE Code : 6755 PUN Code : CEGP019070 AISHE Code : C-45874



Prof.(Dr.) T. J.Sawant

D.E.E., B.E.(Electrical), Ph.D., MISTE
Founder - Secretary

Prof.(Dr.)M.M.Sardeshmukh

BTech (E&TC) MTech (E&TC), Ph.D. (Engg)
DIRECTOR

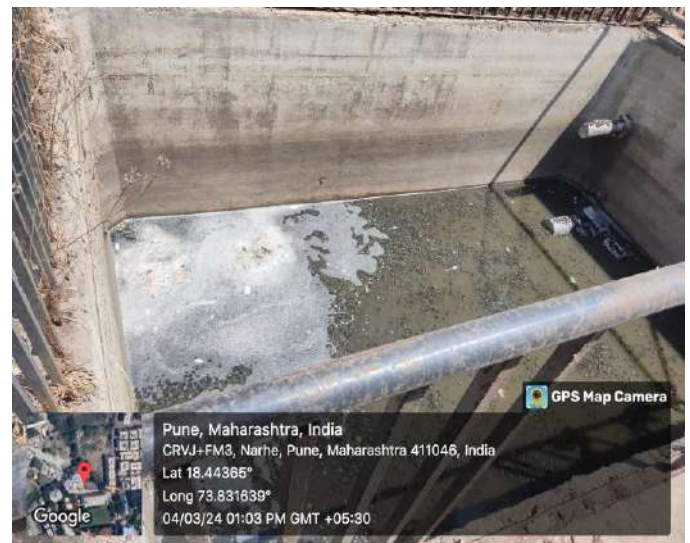
III. Waste water Recycling:



Automation panel for water recycling



Filters



Grit removal



Jayawant Shikshan Prasarak Mandal's JSPM Narhe Technical Campus

S. No. 12/2/2 and 14/9, Narhe, Tal : Haveli, Dist.: Pune – 411041

Phone : +91 20 2460 8700, 701, 702 Email : director@jspmntc.edu.in Web : www.jspmntc.edu.in

Affiliated to Savitribai Phule Pune University. Approved by AICTE New Delhi and DTE Maharashtra.

DTE Code : 6755 PUN Code : CEGP019070 AISHE Code : C-45874



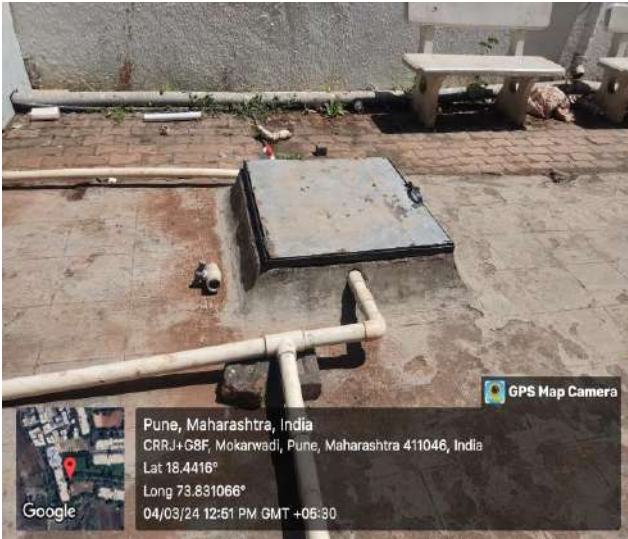
Prof.(Dr.) T. J.Sawant

D.E.E., B.E.(Electrical), Ph.D., MISTE
Founder - Secretary

Prof.(Dr.)M.M.Sardeshmukh

BTech (E&TC) MTech (E&TC), Ph.D. (Engg)
DIRECTOR

IV. Maintenance of water bodies and distribution system in the campus:



(i)



(ii)



Distribution system


Director
Director
JSPM-NTC
JSPM Narhe Technical Campus
Narhe, Pune - 411041



Jayawant Shikshan Prasarak Mandal's JSPM Narhe Technical Campus



S. No. 12/2/2 and 14/9, Narhe, Tal : Haveli, Dist.: Pune - 411041

Phone : +91 20 2460 8700, 701, 702 Email : director@jspmntc.edu.in Web : www.jspmntc.edu.in

Affiliated to Savitribai Phule Pune University. Approved by AICTE New Delhi and DTE Maharashtra.

DTE Code : 6755 PUN Code : CEGP019070 AISHE Code : C-45874

Prof.(Dr.)T. J.Sawant
D.E.E., B.E.(Electrical),Ph.D., MISTE
Founder - Secretary

Prof.(Dr.) S.A.Choudhari
B.E.(CWM),M.E.(WRE) Ph.D.(Engg.)
DIRECTOR

Date : 25th Dec 2023

The institute initiatives for greening the campus are as follows:

Restricted Automobile Entry




Director

JSPM NTC

Director
JSPM Narhe Technical Campus
Narhe, Pune - 411041



Jayawant Shikshan Prasarak Mandal's JSPM Narhe Technical Campus



S. No. 12/22 and 14/9, Narhe, Tal : Haveli, Dist.: Pune - 411041

Phone : +91 20 2460 8700, 701, 702 Email : director@jspmnc.edu.in Web : www.jspmnc.edu.in

Affiliated to Savitribai Phule Pune University. Approved by AICTE New Delhi and DTE Maharashtra.

DTE Code : 6755 PUN Code : CEGP015070 AISHE Code : C-45874

Prof.(Dr.)T. J.Sawant
D.E.E., B.E.(Electrical),Ph.D., MISTE
Founder - Secretary

Prof.(Dr.) S.A.Choudhari
B.E.(CWM),M.E.(WRE) Ph.D.(Engg.)
DIRECTOR

Date : 25th Dec 2023

Pedestrian Friendly Pathways



(Signature)
Director

JSPM NTC

Director
JSPM Narhe Technical Campus
Narhe, Pune - 411041



Jayawant Shikshan Prasarak Mandal's JSPM Narhe Technical Campus



S. No. 12/2/2 and 14/9, Narhe, Tal : Haveli, Dist.: Pune - 411041

Phone : +91 20 2460 8700, 701, 702 Email : director@jspmntc.edu.in Web : www.jspmntc.edu.in

Affiliated to Savitribai Phule Pune University. Approved by AICTE New Delhi and DTE Maharashtra.

DTE Code : 6755 PUN Code : CEGP010070 AISHE Code : C-45874

Prof.(Dr.)T. J.Sawant
D.E.E., B.E.(Electrical), Ph.D., MISTE
Founder - Secretary

Prof.(Dr.) S.A.Choudhari
B.E.(CWM), M.E.(WRE) Ph.D.(Engg.)
DIRECTOR

Date : 25th Dec 2023

Landscaping with trees and plants

Green Campus Clean Campus



Pune, Maharashtra, India
CIRJ-093, Mokalwad, Pune, Maharashtra 411046, India
Lat 18.441637°
Long 73.821088°





Jayawant Shikshan Prasarak Mandal's JSPM Narhe Technical Campus



S. No. 12/212 and 14/9, Narhe, Tal: Haveli, Dist.: Pune - 411041

Phone : +91 20 2460 8700, 701, 702 Email : director@jspmntc.edu.in Web : www.jspmntc.edu.in

Affiliated to Savitribai Phule Pune University. Approved by AICTE New Delhi and DTE Maharashtra.

DTE Code : 6755 PUN Code : CEGP019070 AISHE Code : C-45874

Prof.(Dr.)T. J.Sawant
D.E.E., B.E.(Electrical),Ph.D., MISTE
Founder - Secretary

Prof.(Dr.) S.A.Choudhari
B.E.(CWM),M.E.(WRE) Ph.D.(Engg.)
DIRECTOR




Director
JSPM NTC



Director
JSPM Narhe Technical Campus
Narhe, Pune - 411041



Jayawant Shikshan Prasarak Mandal's JSPM Narhe Technical Campus

S. No. 12/2/2 and 14/9, Narhe, Tal : Havell, Dist.: Pune - 411041

Phone : +91 20 2460 8700, 701, 702 Email : director@jspmntc.edu.in Web : www.jspmntc.edu.in

Affiliated to Savitribai Phule Pune University. Approved by AICTE New Delhi and DTE Maharashtra.

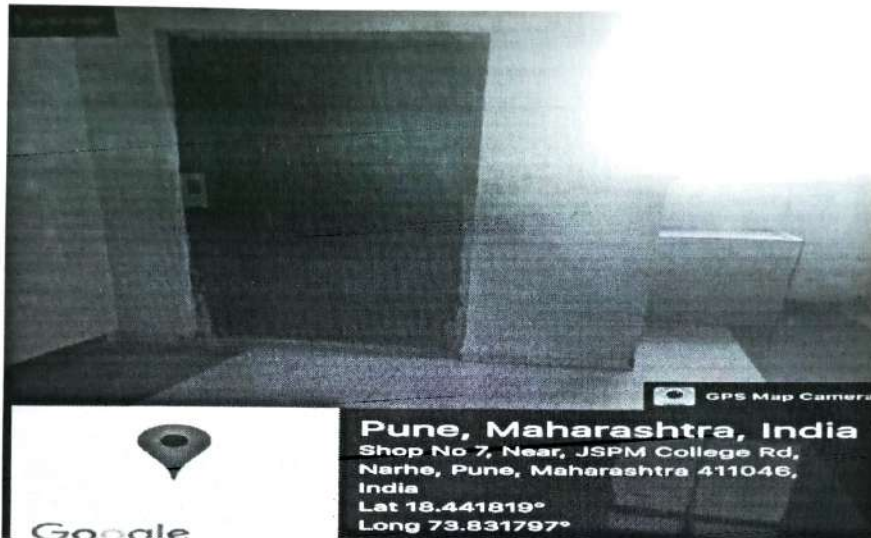
DTE Code : 6755 PUN Code : CEGP019070 AISHE Code : C-45874



Prof.(Dr.)T. J.Sawant
D.E.E., B.E.(Electrical),Ph.D., MISTE
Founder - Secretary

Prof.(Dr.)M.M.Sardeshmukh
B.Tech (E&TC) M.Tech (E&TC),Ph.D.(Engg.)
DIRECTOR

1. Provision for Lift



2. Ramp/Rail




Director JSPM-NTC
Director
JSPM Narhe Technical Campus
Narhe, Pune - 411041



Jayawant Shikshan Prasarak Mandal's
JSPM Narhe Technical Campus

S. No. 12/22 and 14/9, Narhe, Tal : Haveli, Dist.: Pune - 411041

Phone : +91 20 2460 8700, 701, 702 Email : director@jspmntc.edu.in Web : www.jspmntc.edu.in

Affiliated to Savitribai Phule Pune University, Approved by AICTE New Delhi and DTE Maharashtra.

DTE Code : 6755 PUN Code : CEGP019070 AISHE Code : C-45874



Prof.(Dr.)T. J.Sawant
D.E.E., B.E.(Electrical),Ph.D., MISTE
Founder - Secretary

Prof.(Dr.)M.M.Sardeshmukh
B.Tech (E&TC) M.Tech (E&TC),Ph.D.(Engg.)
DIRECTOR

3. Washroom




Director JSPM-NTC
Director
JSPM Narhe Technical Campus
Narhe, Pune - 411041



Jayawant Shikshan Prasarak Mandal's JSPM Narhe Technical Campus

S. No. 12/2/2 and 14/9, Narhe, Tal : Haveli, Dist.: Pune - 411041

Phone : +91 20 2460 8700, 701, 702 Email : director@jspmntc.edu.in Web : www.jspmntc.edu.in

Affiliated to Savitribai Phule Pune University. Approved by AICTE New Delhi and DTE Maharashtra.

DTE Code : 6755 PUN Code : CEGP019070 AISHE Code : C-45874

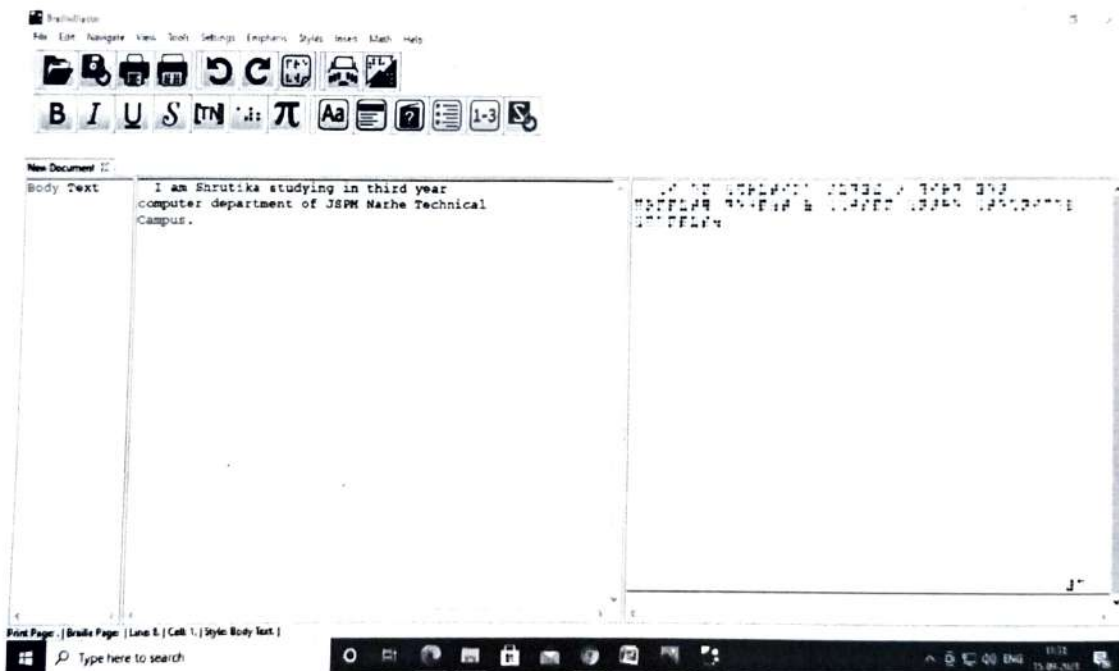


Prof.(Dr.)T. J.Sawant
D.E.E., B.E. (Electrical), Ph.D., MISTE
Founder - Secretary

Prof.(Dr.)M.M.Sardeshmukh
B.Tech (E&TC) M.Tech (E&TC), Ph.D (Engg.)
DIRECTOR

4.Braille Software

The Braille Software is available in the institute. A screen shot of Braille Software is as follows:




Director JSPM-NTC
Director
JSPM Narhe Technical Campus
Narhe, Pune - 411041



Jayawant Shikshan Prasarak Mandal's
JSPM Narhe Technical Campus

S. No. 12/22 and 14/9, Narhe, Tal : Haveli, Dist.: Pune - 411041

Phone : +91 20 2460 8700, 701, 702 Email : director@jspmntc.edu.in Web : www.jspmntc.edu.in

Affiliated to Savitribai Phule Pune University. Approved by AICTE New Delhi and DTE Maharashtra.

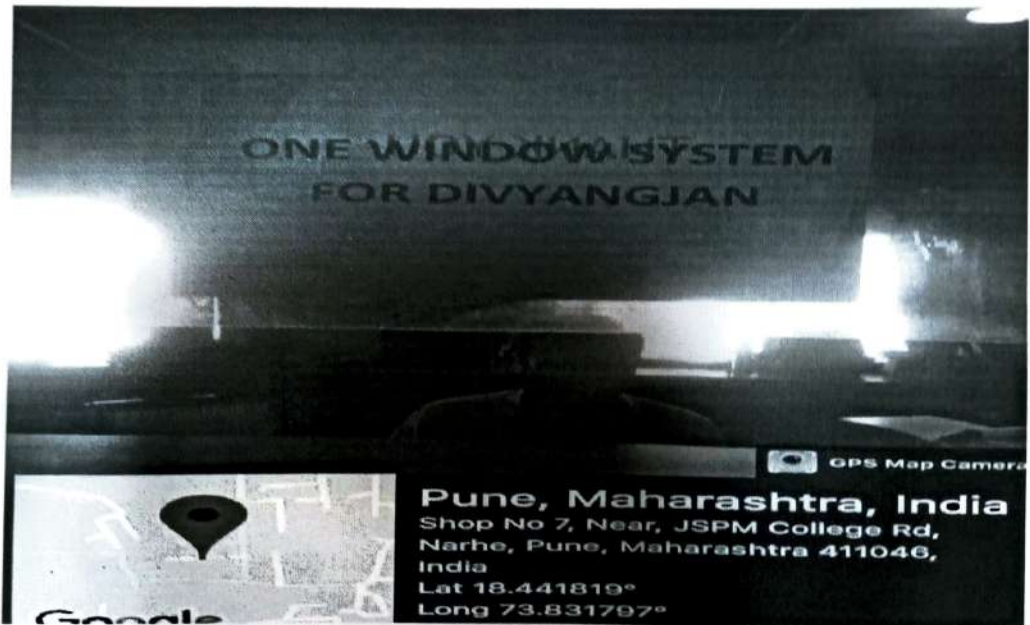
DTE Code : 6755 PUN Code : CEGP019070 AISHE Code : C-45874



Prof.(Dr.)T. J.Sawant
D.E.E., B.E. (Electrical), Ph.D., MISTE
Founder - Secretary

Prof.(Dr.)M.M.Sardeshmukh
B.Tech (E&TC) M.Tech (E&TC), Ph.D (Engg.)
DIRECTOR

5. One Window System for Divyangjan




Director JSPM-NTC
Director
JSPM Narhe Technical Campus
Narhe, Pune - 411041



Jayawant Shikshan Prasarak Mandal's JSPM Narhe Technical Campus

S. No. 12/2 and 14/9, Narhe, Tal: Haveli, Dist: Pune - 411041

Phone : +91 20 2460 8700, 701, 702 Email : director@jspmntc.edu.in Web : www.jspmntc.edu.in

Affiliated to Savitribai Phule Pune University. Approved by AICTE New Delhi and DTE Maharashtra.

DTE Code : 6755 PUN Code : CEGP019070 AISHE Code : C-45874



Prof.(Dr.)T. J.Sawant
D.E.E., B.E. (Electrical), Ph.D., MISTE
Founder - Secretary

Prof.(Dr.)M.M.Sardeshmukh
B.Tech (E&TC) M.Tech (E&TC), Ph.D.(Engg.)
DIRECTOR

Policy Document

Concessions for Differently Abled

- As per order of Pune University, our college gives exemption in relaxation of time by twenty minutes for per one hour question paper to handicapped, blind and learning disables students.
- Separate room allotted for them to write the exams with assigned invigilator.

Steps for Differently Abled

The institution shall provide following essential steps for the benefit of differently abled person:

- Assuring counseling to differently abled students on the types of courses they should study at the higher education institutions
- To encourage students with disabilities from rural background to pursue higher education, cash awards in academic excellence.
- Will not oppose any admission on basis of being differently abled.
- Disseminate information regarding government or university orders dealing with fee concessions, examination procedures, reservation, policies etc partaking to differently abled persons.
- Assess the educational needs of differently abled persons enrolled in the higher education institutes to determine the types of assistive devices to be procured.
- Assess the ability of differently abled students and assist them in getting appropriate employment through training and placement.

Amenities for differently abled

Apart from the above orders specified by Pune University and various steps to be taken by the institute, the institute shall ensure that following amenities shall be in place for disabled students:

1. **Ramp/Rail:** The institute shall provide barrier free environment in important building for differently-able students, Ramp/rail shall be sited at the main entrance and exit of the building, where any disabled student can easily identify and access it. The ramp shall be wide enough that a wheel chair user can use without any problem
- **Scribes for examination:** The institution shall provide or allow scribes for those students who are in need while writing examination. Controller of examination shall allow the student on the recommendations of principal to grant extra time to disabled candidates for answering papers at university examinations. Extra time up twenty minutes for per one hour question paper to handicapped, blind and learning disables students.




Director JSPM-NTC
JSPM Narhe Technical Campus
Narhe, Pune - 411041